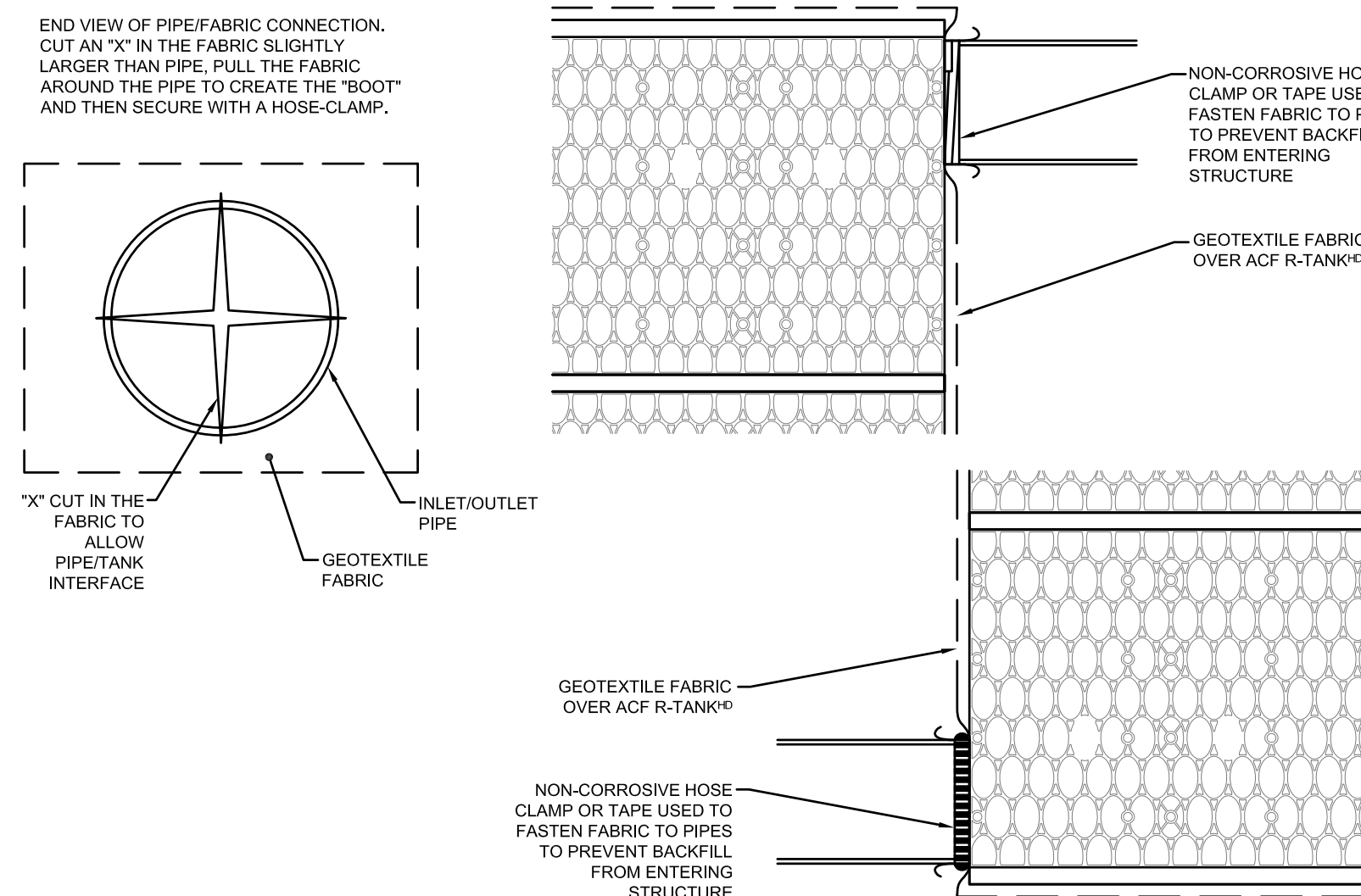


MODULE DATA	
GEOMETRY: LENGTH = 28.15 IN. (715 MM)	LOAD RATING: 40 PSI. (MODULE ONLY)
WIDTH = 15.75 IN. (400 MM)	HS25, (WITH ACF COVER SYSTEM)
HEIGHT = 33.86 IN. (860 MM)	
STORAGE VOLUME = 8.25 CF (234 L)	MATERIAL: 85% RECYCLED POLYPROPYLENE
VOID INTERNAL VOLUME: 95%	
VOID SURFACE AREA: 90%	



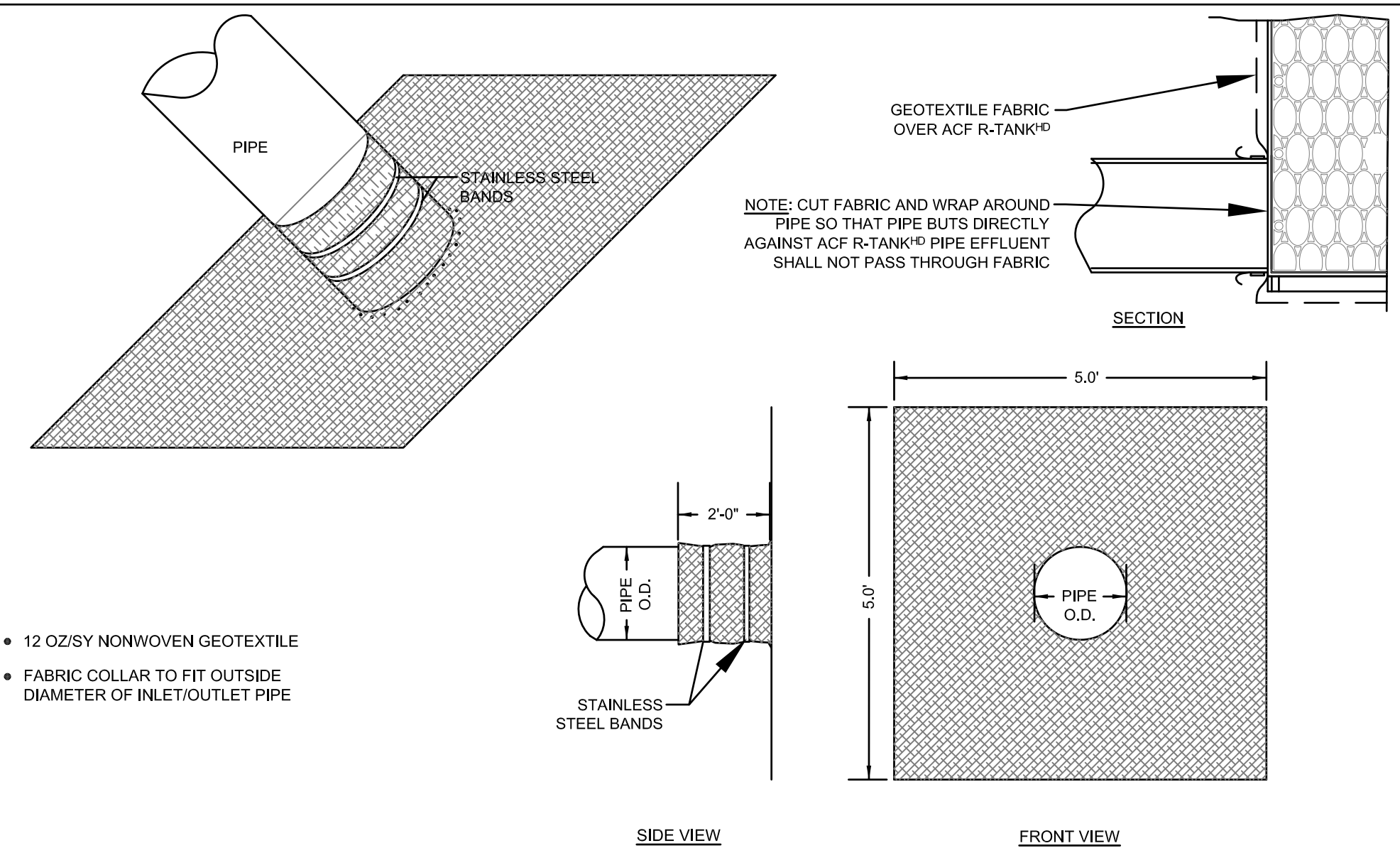
R-TANK^{HD} - DOUBLE MODULE

FOR ADDITIONAL INFORMATION PLEASE CONTACT: ACF ENVIRONMENTAL, 1-800-448-3636, www.acfenvironmental.com



R-TANK^{HD} TYPICAL TANK INLET/OUTLET DETAIL

FOR ADDITIONAL INFORMATION PLEASE CONTACT: ACF ENVIRONMENTAL, 1-800-448-3636, www.acfenvironmental.com

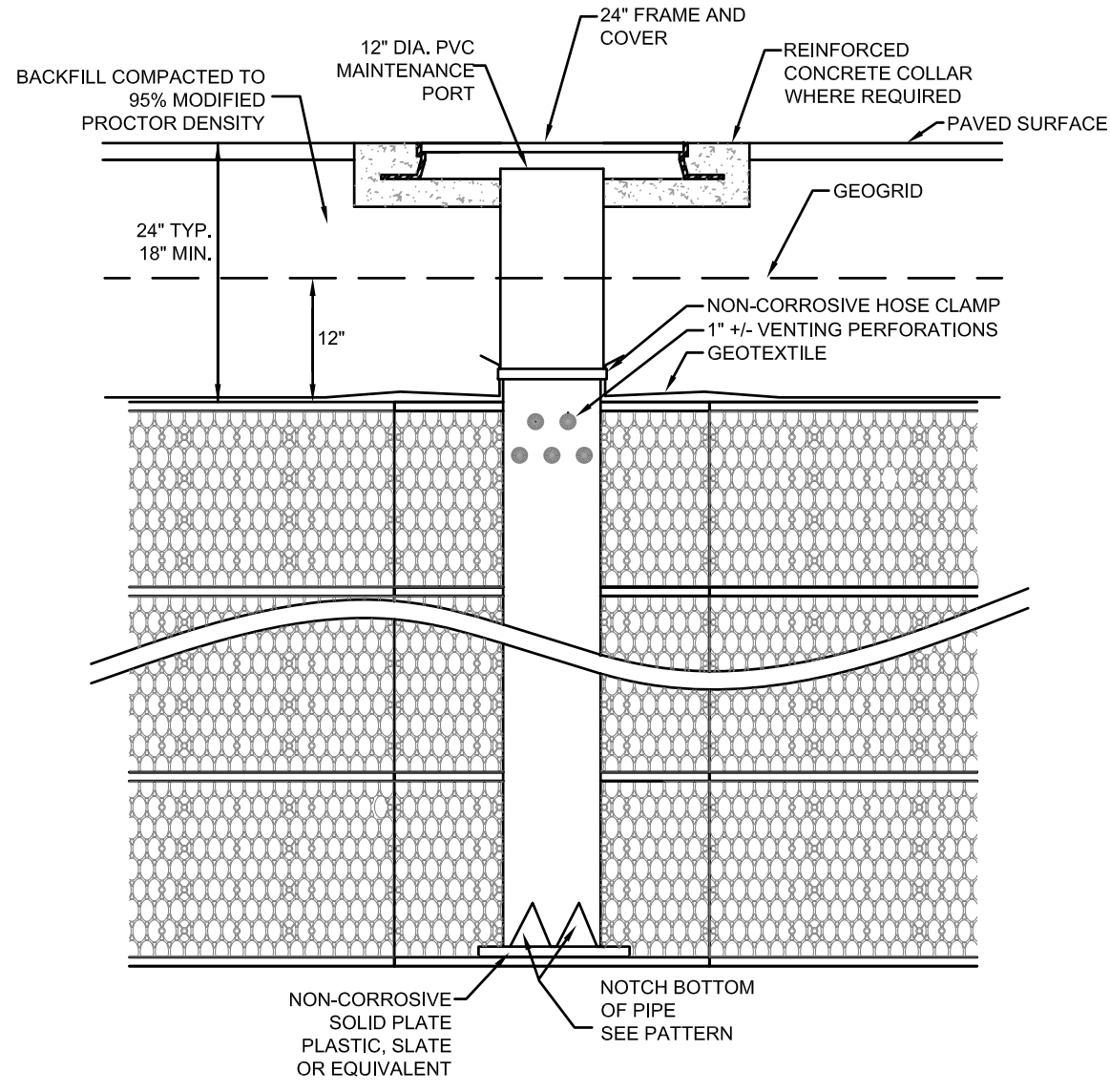
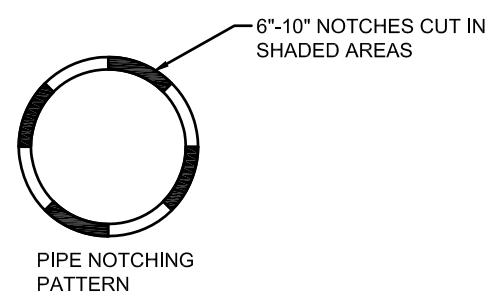


FABRIC PIPE BOOT FOR R-TANK^{HD}

FOR ADDITIONAL INFORMATION PLEASE CONTACT: ACF ENVIRONMENTAL, 1-800-448-3636, www.acfenvironmental.com

MAINTENANCE PORT

THIS PORT IS USED TO PUMP WATER INTO THE SYSTEM AND RE-SUSPEND ACCUMULATED SEDIMENT SO THAT IT MAY BE PUMPED OUT. MINIMUM REQUIRED MAINTENANCE INCLUDES A QUARTERLY INSPECTION DURING THE FIRST YEAR OF OPERATION AND A YEARLY INSPECTION THEREAFTER, FLUSH AS NEEDED.



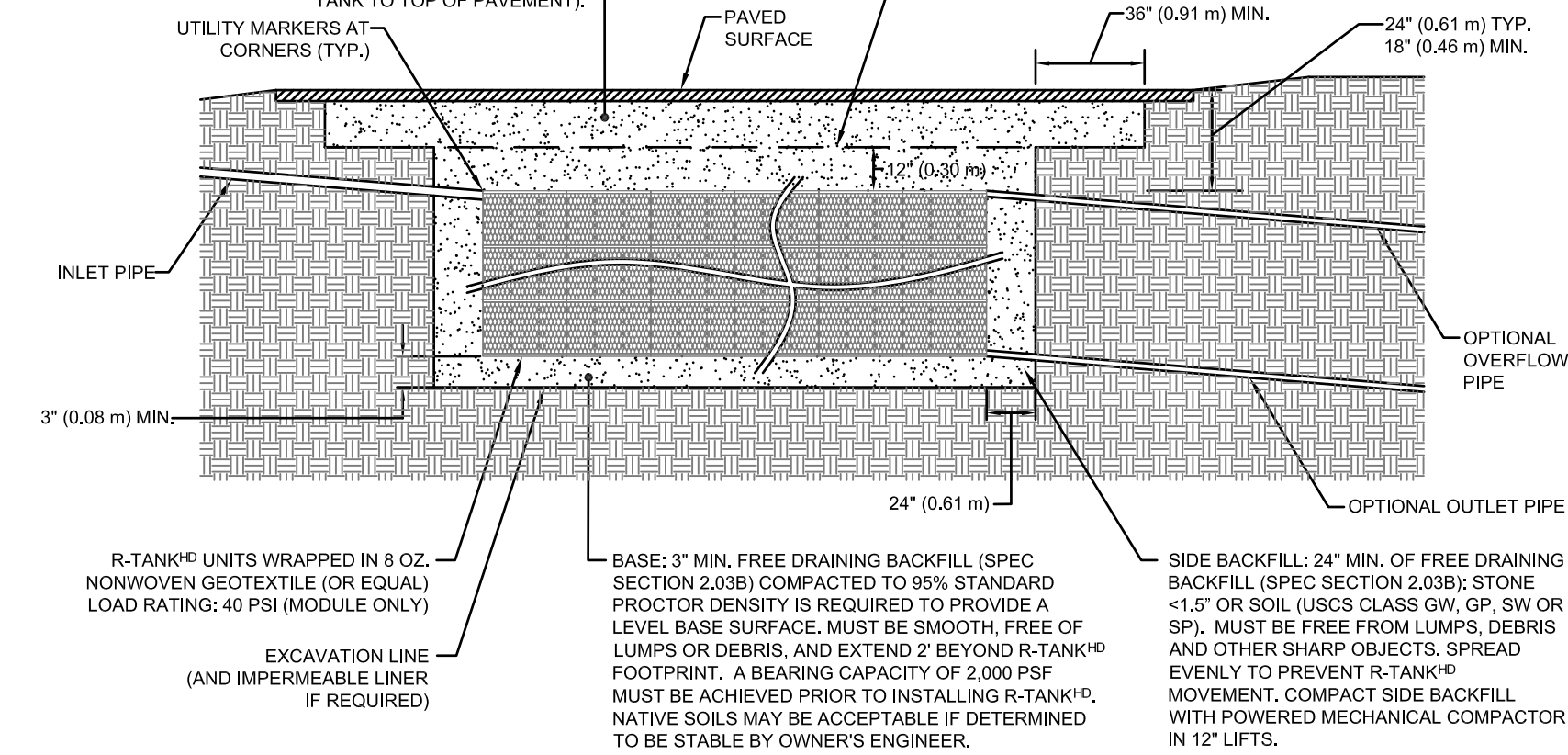
R-TANK^{HD} TYPICAL MAINTENANCE PORT

FOR ADDITIONAL INFORMATION PLEASE CONTACT: ACF ENVIRONMENTAL, 1-800-448-3636, www.acfenvironmental.com

TOP BACKFILL: 18\"/>
FREE DRAINING BACKFILL (SPEC SECTION 2.03B); STONE <1.5\"/>
USCS CLASS GW, GP, SW OR SP; ADDITIONAL FILL MAY BE STRUCTURAL FILL (SPEC SECTION 2.03C); STONE OR SOIL (USCS CLASS SM, SP, SW, GM, GP OR GW) WITH MAX CLAY CONTENT <10%, MAX 25% PASSING NO. 200 SIEVE, AND MAX PLASTICITY INDEX OF 4. A MIN. 12\"/>
MIN. 12\"/>
EQUIPMENT AND THE TOP OF THE R-TANK^{HD} SYSTEM AT ALL TIMES. FOR BEST RESULTS, PUSH OUT 14\"/>
REFER TO THE R-TANK^{HD} INSTALLATION GUIDE FOR LISTING OF ACCEPTABLE EQUIPMENT. TOTAL HEIGHT OF TOP BACKFILL SHOULD NOT EXCEED 10\"/>
CONTACT ACF ENVIRONMENTAL IF MORE THAN 10\" OR LESS THAN 18\" OF TOP BACKFILL IS REQUIRED (FROM TOP OF TANK TO TOP OF PAVEMENT).

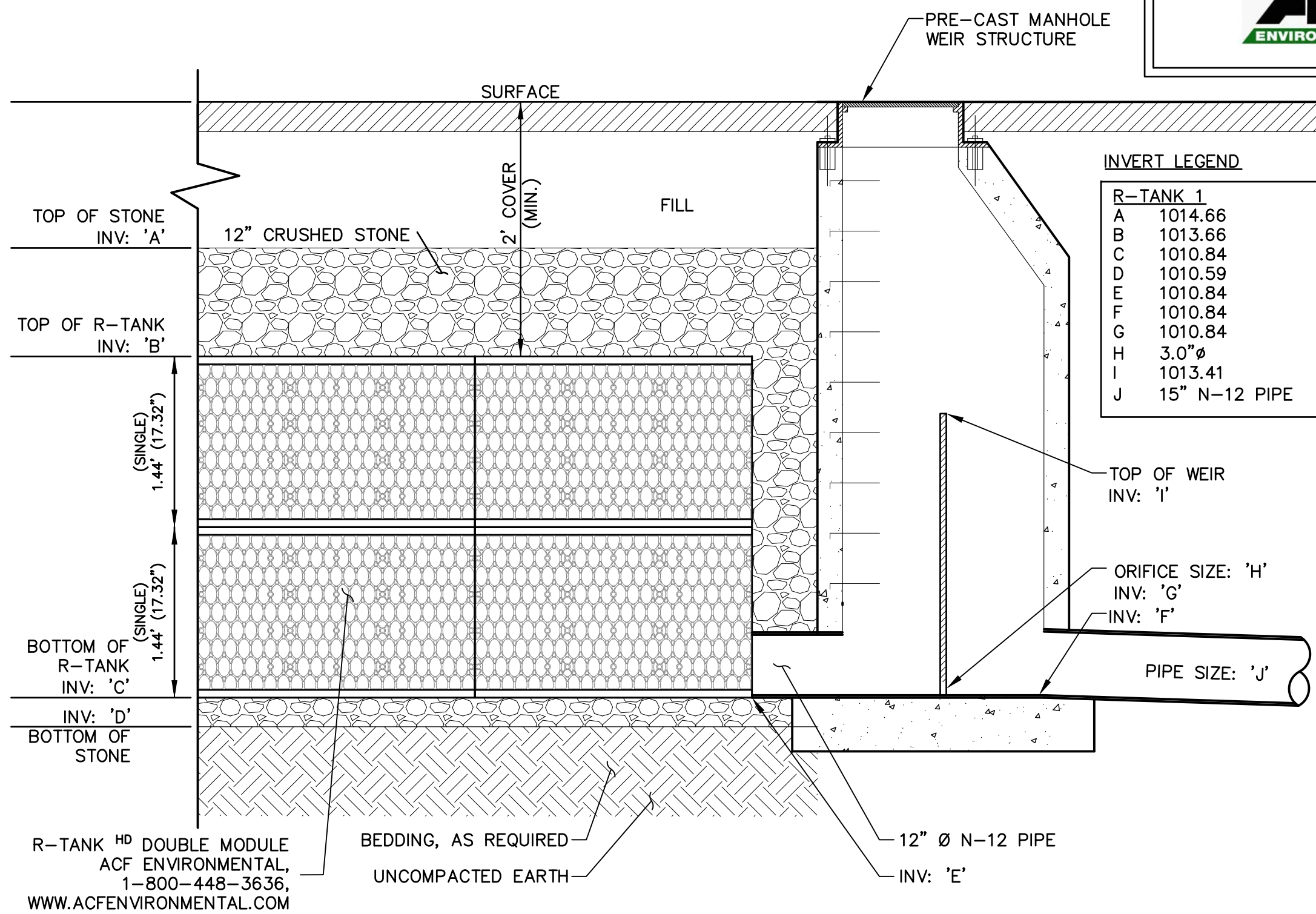
NOTES:

- FOR COMPLETE MODULE DATA, SEE APPROPRIATE R-TANK^{HD} SHEET (SINGLE MODULE, DOUBLE MODULE, TRIPLE MODULE, QUAD MODULE, OR PENTA MODEL).
- INSTALLATIONS PER THIS DETAIL MEET GUIDELINES OF H2O LOADING PER THE 1983, 13TH EDITION OF THE AMERICAN ASSOCIATION OF STATE, HIGHWAY AND TRAFFIC OFFICIALS (AASHTO) STANDARD SPECIFICATIONS.
- PRE-TREATMENT STRUCTURES NOT SHOWN.



R-TANK^{HD} - H2O LOADS

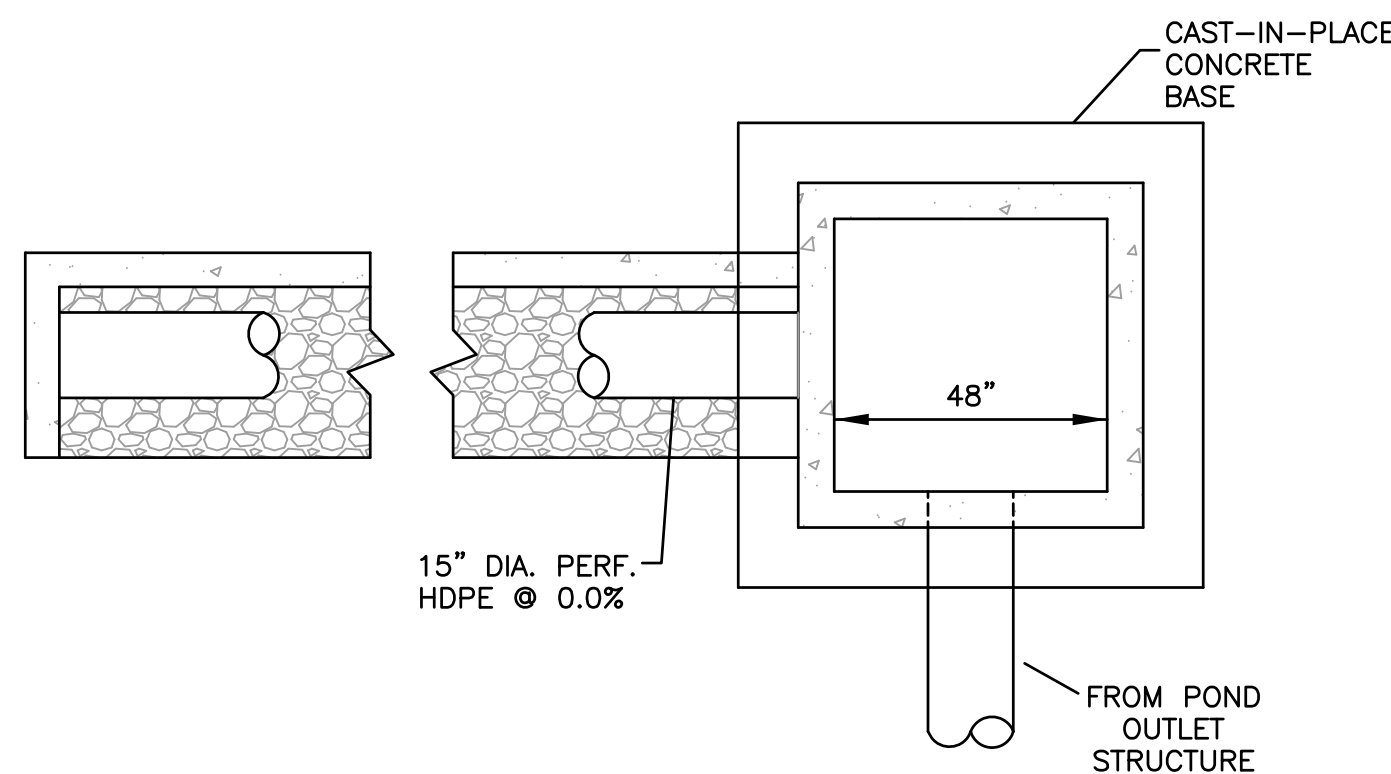
FOR ADDITIONAL INFORMATION PLEASE CONTACT: ACF ENVIRONMENTAL, 1-800-448-3636, www.acfenvironmental.com



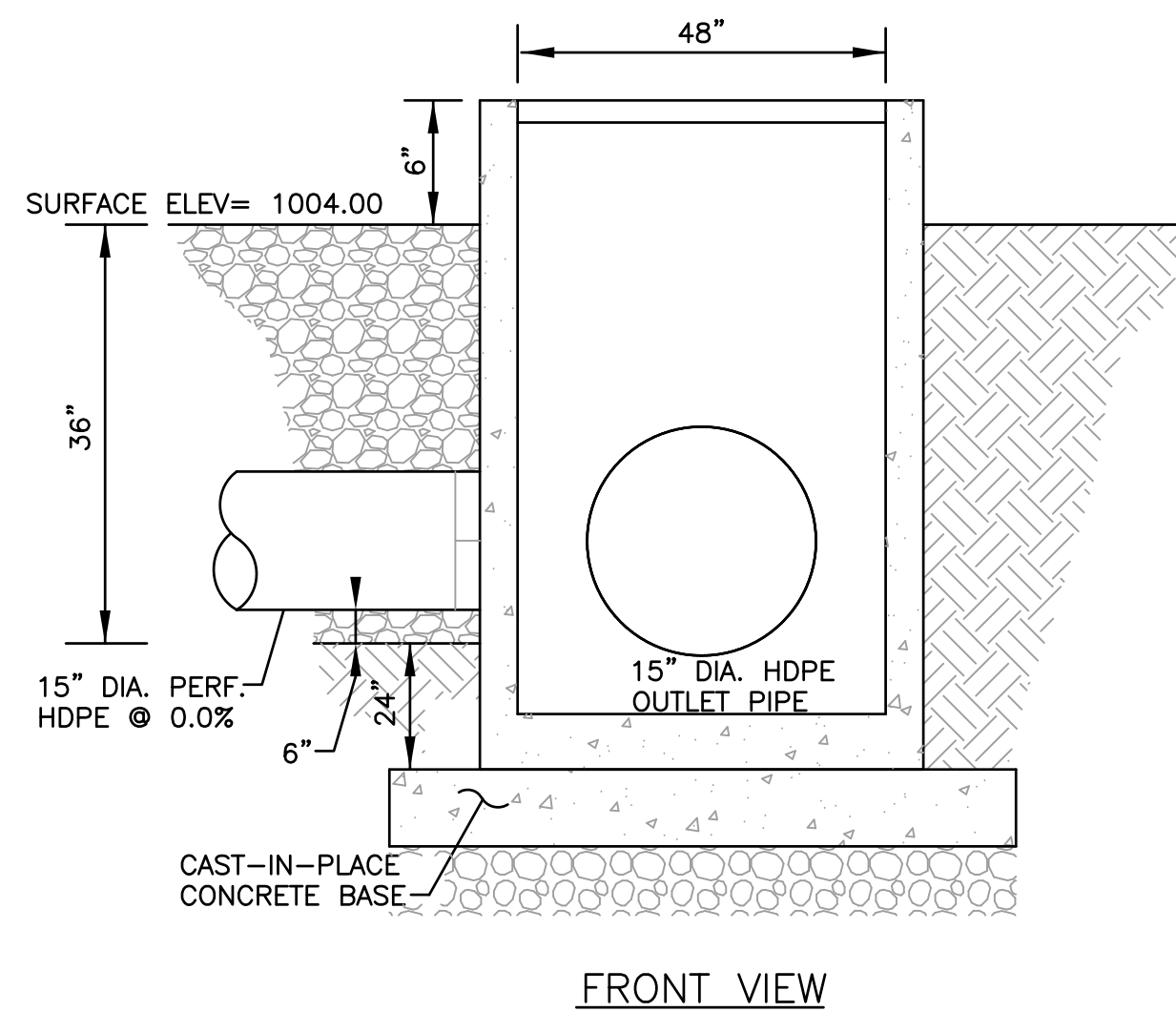
R-TANK^{HD} DOUBLE MODULE
ACF ENVIRONMENTAL
1-800-448-3636
WWW.ACFENVIRONMENTAL.COM

R-TANK DOUBLE MODULE NOT TO SCALE

LEVEL SPREADER POND OUTFALL

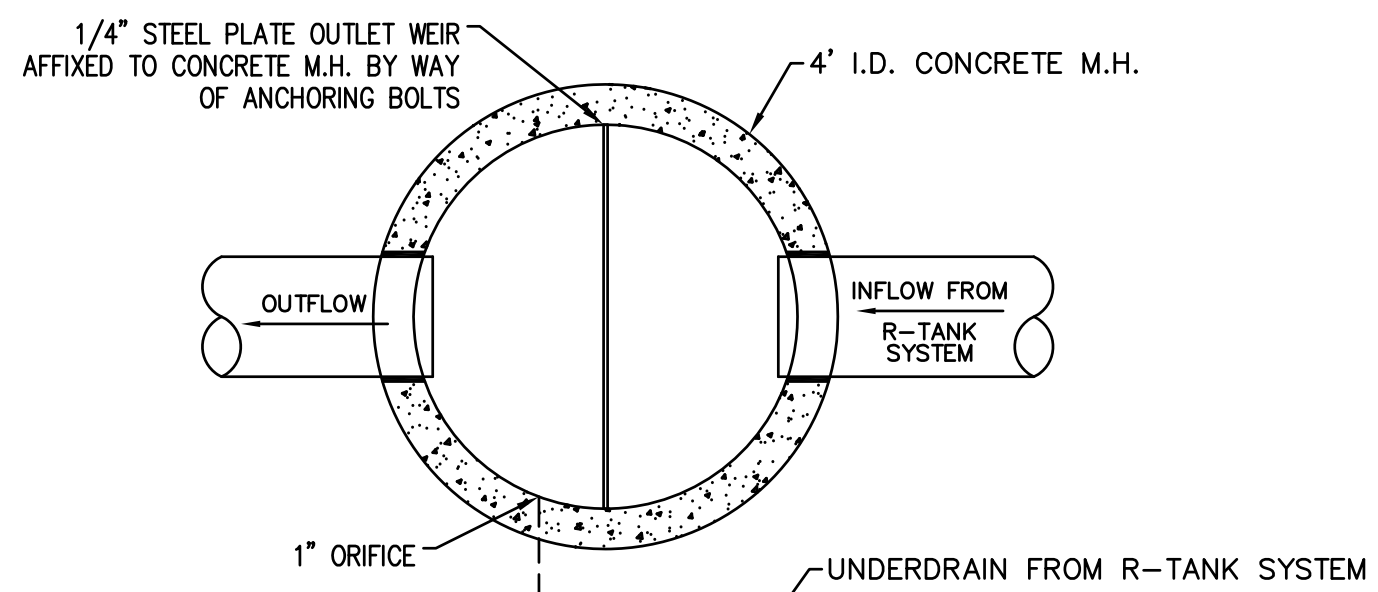


LEVEL SPREADER DETAIL NOT TO SCALE

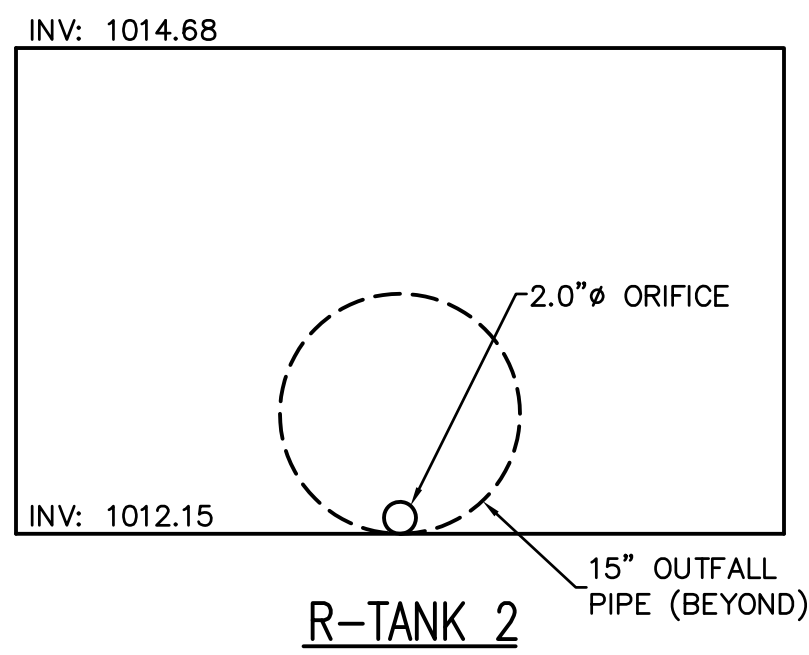
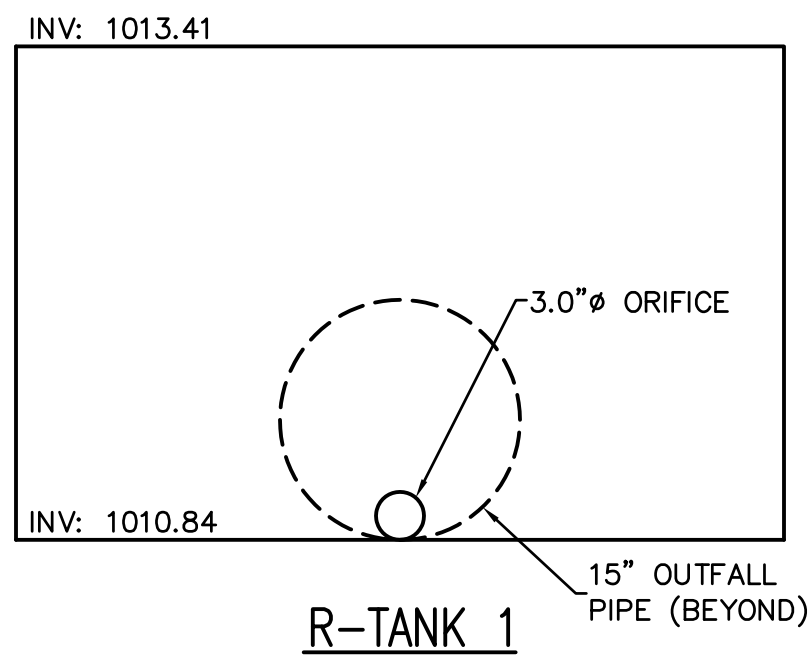


INVERT LEGEND

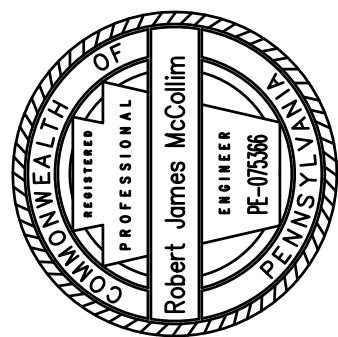
R-TANK 1		R-TANK 2	
A	1014.66	A	1015.97
B	1013.66	B	1014.97
C	1010.84	C	1012.15
D	1010.59	D	1011.90
E	1010.84	E	1012.15
F	1010.84	F	1012.15
G	1010.84	G	1012.15
H	3.0\"	H	1.5\"
I	1013.41	I	1014.68
J	15\" N-12 PIPE	J	15\" N-12 PIPE



WIER PLATE ATTACHMENT DETAIL SCALE: 1\"/>



WIER PLATE ELEVATIONS SCALE: 1\"/>



A&E SEAL:

ACKNOWLEDGEMENT OR "SIGN-OFF" BY PARTIES TO THE CONSTRUCTION DOCUMENTS IS REQUIRED FOR ALTERATION OF LEASE TERMS. THE INFORMATION CONTAINED IN THIS SET OF DOCUMENTS IS PROPRIETARY BY NATURE. ANY USE OR DISCLOSURE TO OTHER THAN THAT WHICH RELATES TO THE PROJECT FOR WHICH IT WAS PREPARED, WITHOUT THE WRITTEN CONSENT OF ACF ENVIRONMENTAL, IS A VIOLATION OF LAW FOR ANY PERSON. UNLESS THEY ARE WORKING UNDER THE DIRECTION OF A LICENSED PROFESSIONAL ENGINEER, TO ALTER THIS DOCUMENT.

HAMPTON INN & SUITES
BAIR BOULEVARD
NEW STANTON, PA 15672
WESTMORELAND COUNTY, PENNSYLVANIA

REVISIONS:		REVISED PER MUNICIPAL COMMENTS	
MARK	DATE	DATE	DESCRIPTION
1	7/11/2016		

PROJ NO: 1511
SCALE: AS SHOWN
DATE: 5/18/2016
DESIGNED BY: RJM
DRAWN BY: MJN
CHECKED BY: CKM

SHEET TITLE:
STORMWATER MANAGEMENT DETAILS
SHEET 2 OF 2

SHEET NO.
C4.3